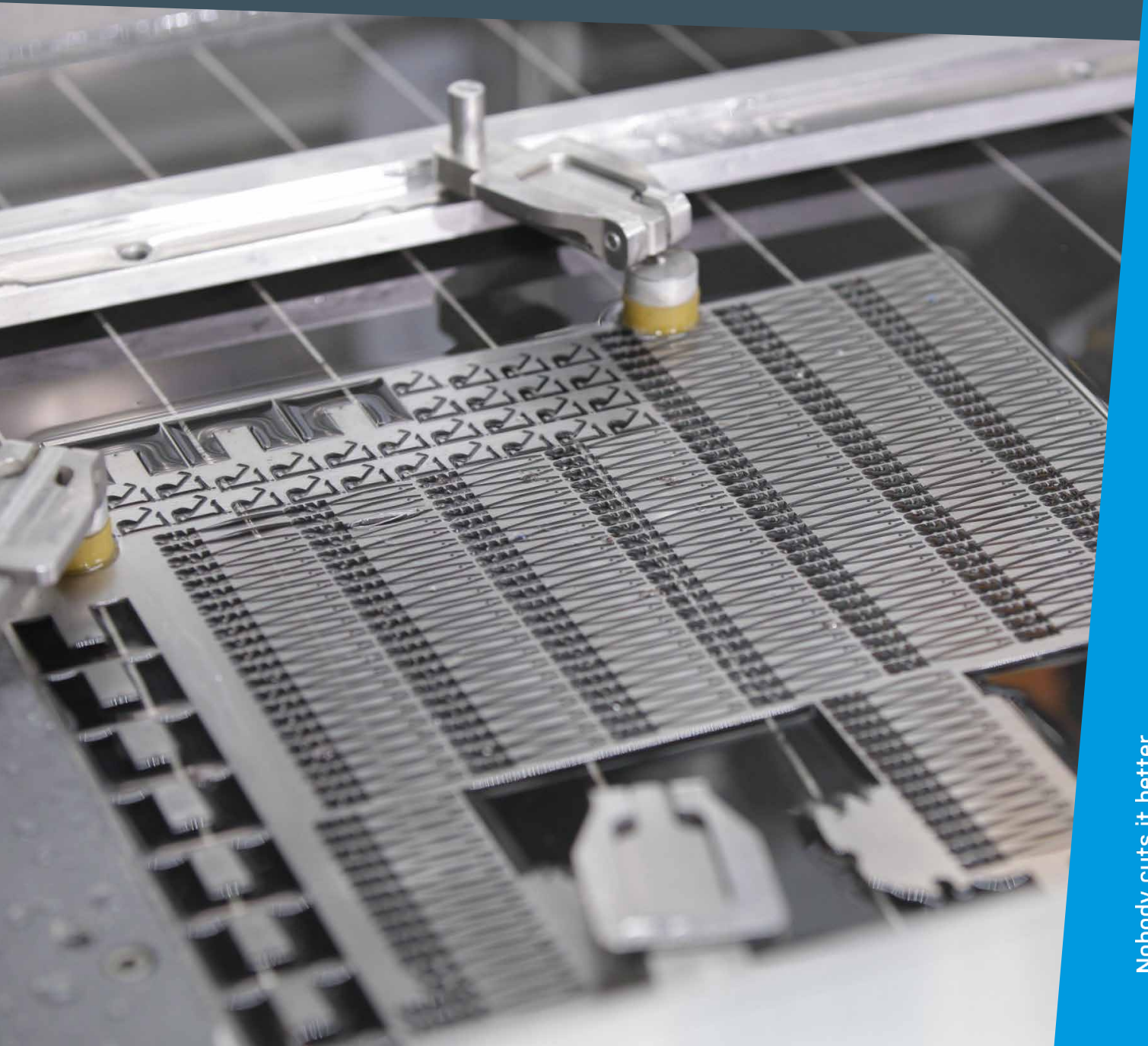




Waterjet Group

MicroCut

The specialist for highest precision and extremely filigree cuts.



Nobody cuts it better.

Your partner close to you

With four locations in Austria, Germany, Switzerland and France, STM Waterjet Group is the partner near you. With more than 30 years of experience in separation technology, STM pays particular attention to innovative modular system technology in combination with **connectivity, intuitive operation and high availability** of STM waterjet cutting systems.

Service has priority

We are there for you – even after the purchase of your waterjet cutting system. This high value of the service concept has prompted us to found RWS – Real Waterjet Service GmbH. As an STM Premium Partner of STM Waterjet, RWS puts service for you first. RWS will be your long term partner and companion from the time of delivery of the machine.



Precision and speed

Innovative design in combination with the STM cutting angle compensation head for minimum cutting widths.

StM SmartCut cutting software

The easy to understand STM SmartCut cutting software can be adapted to individual requirements using modular upgrades. In the graphical user interface, all parameters can be set intuitively and .dwg, .dxf, .step, .iges files can be imported directly.

Compact and fully integrated

The MicroCut combines all components in a very small space: low-vibration granite frame, high-precision clamping frame, linear motor axes, CNC control and abrasive system.

Resource-sparing and environmentally friendly

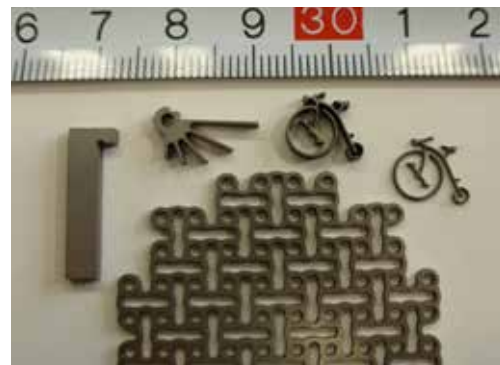
STM plants are characterised by low operating costs. The waterjet cutting systems are designed to require as little compressed air, power and water as possible.

MicroCut

The specialist for highest precision and extremely filigree cuts

This micro-waterjet cutting system of the latest generation combines the high repeat accuracy and precision of direct drives with the smallest possible exterior dimensions. Unlike conventional cutting systems, MicroCut can also produce extremely delicate and complicated components in a variety of materials and with record accuracy. At the same time the in-

tegrated SmartCut-Software guarantees significant material, personnel and time savings. This makes the MicroCut the ultimate all-round solution for progressive miniaturization e.g. in the medical engineering, micro-electronics and sealing technology sectors.

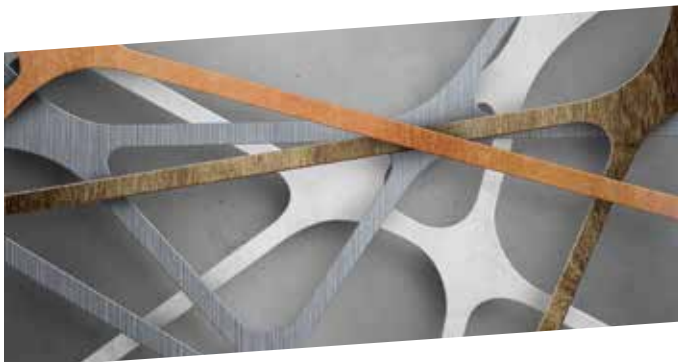


Experience flexibility.

STM waterjet cutting systems can cut almost all solid materials. The spectrum ranges from metals, stone, tiles, glass and wood all the way to foams, rubber, plastics and foodstuffs. STM waterjet cutting systems can be equipped with either a pure water or an abrasive cutting head, depending on the requirements.

pure water	abrasive
------------	----------

plastic	copper
foam	aluminium
stone/ ceramics	steel
glass	wood
carbon	brass





Waterjet Group



MicroCut V1

Workspace (X, Y, Z):	700x500x150 mm
Dimensions (W x D x H):	1610x1260x2850 mm
Repeatability:	± 0,005 mm (per meter at 20°, +/- 5°)
Positioning accuracy:	± 0,005 mm (per meter at 20°, +/- 5°)
Accuracy of the waterjet:	± 0,02 mm
Travel speed max.:	10 m/min



MicroCut MJ

Workspace with TAC(X, Y, Z):	1000x500x100 mm
Max. working area (x, y, z):	1000x750x100 mm
Dimensions (W x D x H):	2200x2200x2180 mm
Repeatability:	± 0,0025 mm (per meter at 20°, +/- 5°)
Positioning accuracy:	± 0,0025 mm (per meter at 20°, +/- 5°)
Accuracy of the waterjet:	± 0,01 mm
Travel speed max.:	10 m/min

Im MicroCut MJ / V1 Paket enthalten

- ▶ CNC control NUM FLEXIUM
- ▶ Linear motor drives
- ▶ Direct measuring system
- ▶ Machine rack with solid granite bottom
- ▶ Protection hood with automatic door
- ▶ Positioning laser
- ▶ High precision fixation frame
- ▶ Catcher made of stainless steel with integrated flushing device for used abrasive
- ▶ Ergonomic control panel
- ▶ Control cabinet with reels and air-conditioning unit
- ▶ Computer with 20" LED monitor, keyboard and mouse

- ▶ Waterjetsoftware SmartCut to generate and process your cutting data
- ▶ Waterjet cutting valve with abrasive mixing chamber and accessories
- ▶ Abrasive dosing system CNC with supply tank
- ▶ Abrasive container 100 kg with Minihopper pressure based transport system in the machine frame

Tuning Options

- ▶ TAC cutting head for cutting angle error compensation
- ▶ Drill spindle for spot drilling multilayer materials
- ▶ Height scanner for recording elevation profiles
- ▶ 2. Abrasive system for flexible working

STM WATERJET GMBH

STM is a leading provider of waterjet cutting systems. The company has four locations in Eben im Pongau (Austria), Schweinfurt (Germany), Reiden (Switzerland) and Frans (France) with a total of 70 employees. For more than 30 years, the long-established company has developed pioneering integrated manufacturing solutions – particularly for the steel, aluminium, metal, plastic, stone and glass industry. These are characterized above all by efficiency, ease of operation and wear resistance. In development, STM pays particular attention to innovative modular system technology in combination with connectivity, intuitive operation and high avail-

ability of STM waterjet cutting systems. STM also stands for standard CNC controlled modular portal systems in all dimensions and for all applications. STM systems cover all currently possible cutting tasks in the 2D and 3D range and are characterised above all by their cost-effectiveness and standard of quality. The brand manufacturer thus ensures that its individual manufacturing processes are continually matched to the latest requirements of its customers. Since 2018, the company has also held the sole production rights to BYSTRONIC waterjet cutting systems.

Our solution: Partnership, precision and performance

STM WATERJET GMBH AUSTRIA

Gewerbegebiet Gasthof Süd 178
5531 Eben im Pongau, Austria
T: +43 6458 200 14-0
W: www.stm-waterjet.com
E: info@stm-waterjet.com

STM WATERJET GMBH GERMANY

Alois-Türk-Straße 12
97424 Schweinfurt, Germany
T: +49 9721 946 994-0
W: www.stm-waterjet.com
E: info.de@stm-waterjet.com

STM WATERJET AG SWITZERLAND

Kreuzmatte 1e
6260 Reiden, Switzerland
T: +41 62 772 44 44
W: www.stm-waterjet.ch
E: info.ch@stm-waterjet.com

STM WATERJET SOLUTIONS SARL FRANCE

3 Quai kléber
67000 Strasbourg, France
T: +33 38 823 70 48
W: www.stm-waterjet.fr
E: info.fr@stm-waterjet.com

RWS WATERJET SERVICE GMBH

Hauptstraße 11
4707 Schließberg, Austria
T: +43 7248 660 24
W: www.waterjet-service.com
E: office.rws@waterjet-service.com